

ABOUT US

Established in 2015, Eden-on-the-Park is strategically located near the Sarawak General Hospital Heart Centre (PJHUS) and is registered with Malaysia's Ministry of Health (MOH) and Social Welfare Department (JKM), ensuring trusted care.

Our purpose-built facility, comprising 71 rooms, provides a safe and comfortable environment, integrating Australian aged care management systems to deliver high-quality services.

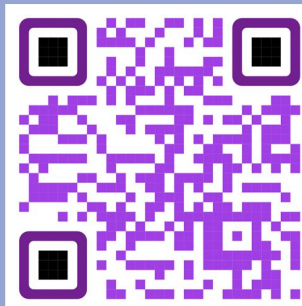
Our services include medication management, vital signs monitoring, personal and nursing care, doctor visits, physiotherapy, and social activities. These services are delivered by registered nurses and trained caregivers to meet individual needs.



成立于2015年，喜登园位于砂拉越中央医院心脏中心附近，并正式向马来西亚卫生部和社会福利局注册，致力于提供专业、可信赖的护理服务。

我们的设施是专为老年护理和疗养而设计建造，共有71间套房，环境舒适安全。我们引入了澳大利亚老年护理管理系统，确保提供优质的护理服务。

我们的护理服务包括药物管理、生命体征监测、疗养护理、医生探访、物理治疗和社交活动。所有服务均由注册护士和专业护理人员全天候提供，以满足每位居民的个性化需求。



SCAN THE CODE
FOR COST ESTIMATION

CONTACT US



care@eden-on-the-park.com.my



www.eden-on-the-park.com.my



Eden on the Park Nursing Care Residence
Kuching-Samarahan Expressway
(Located just a 5-minute drive from
Sarawak Heart Centre)



+6 082 - 505 015



+6 012 - 548 5015 (WhatsApp)



SCAN ME



Eden on the Park Nursing Care Residence 喜登园养老与护理院舍

Care with Dignity
豪华良居 颐养天年



OUR SERVICES

LONG-TERM ASSISTED LIVING CARE (长期养老照护)

Ongoing care for those who are mostly independent but need supervision, meal preparation, personal hygiene assistance and health monitoring in a safe & supportive setting.

SHORT-TERM RESPITE CARE (临时暂托护理)

Temporary care designed for individuals whose primary caregivers are unavailable for a few days or weeks, providing support with daily tasks, supervision and recovery after illness or surgery.

POST-HOSPITALISATION/REHAB CARE (出院后康复护理)

Care for individuals recovering after a hospital stay or surgery. This includes rehabilitation programs, physical therapy and assistance with daily activities to support recovery and restore independence.

SKILLED NURSING CARE (专业疗养护理)

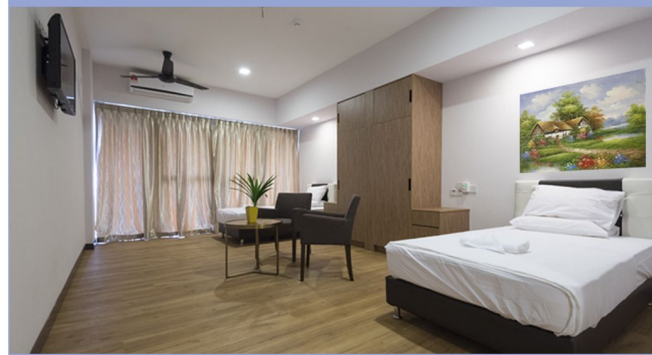
24/7 nursing care and supervision for seniors with health conditions, such as stroke or chronic illness. This includes specialised nursing procedures like catheter care, tube feeding and wound management.

DEMENTIA CARE (失智症护理)

Specialised care for seniors with memory loss, ensuring their safety and comfort.

SENIOR DAY CARE (日托服务)

Daytime care for seniors who need supervision while caregivers are at work.



OUR FACILITIES

ACCOMMODATIONS:

- 71 air-conditioned rooms with nurse call systems
- Single and 2-bedded rooms for comfort & privacy
- En-suite bathrooms, built-in wardrobes, TV

HEALTH & WELLNESS:

- On-site clinic
- Physiotherapy and rehab room
- 24/7 registered nurses and trained carers on duty

DINING & SOCIAL AREAS:

- Centralised kitchen
- Community dining & social area
- Restaurant and visitor lounge
- Auditorium

LIFESTYLE & SUPPORT SERVICES:

- Transportation & escort for appointments
- Laundry & housekeeping services
- Free Wi-Fi
- Salon
- Landscaped garden



THE EDEN DIFFERENCE



■ **Accredited & Trusted:** Registered with the Ministry of Health (MOH) and the Social Welfare Department (JKM).

■ **Qualified Care Team:** Registered nurses, trained caregivers & physiotherapists providing attentive and compassionate care.

■ **Decade of Commitment:** Over 10 years of senior care expertise, with a long-standing commitment to quality recognised by the Consumers' Choice Award.